

MONTHLY MEMBERSHIP PROGRESS REPORT

LOCATION INDIA

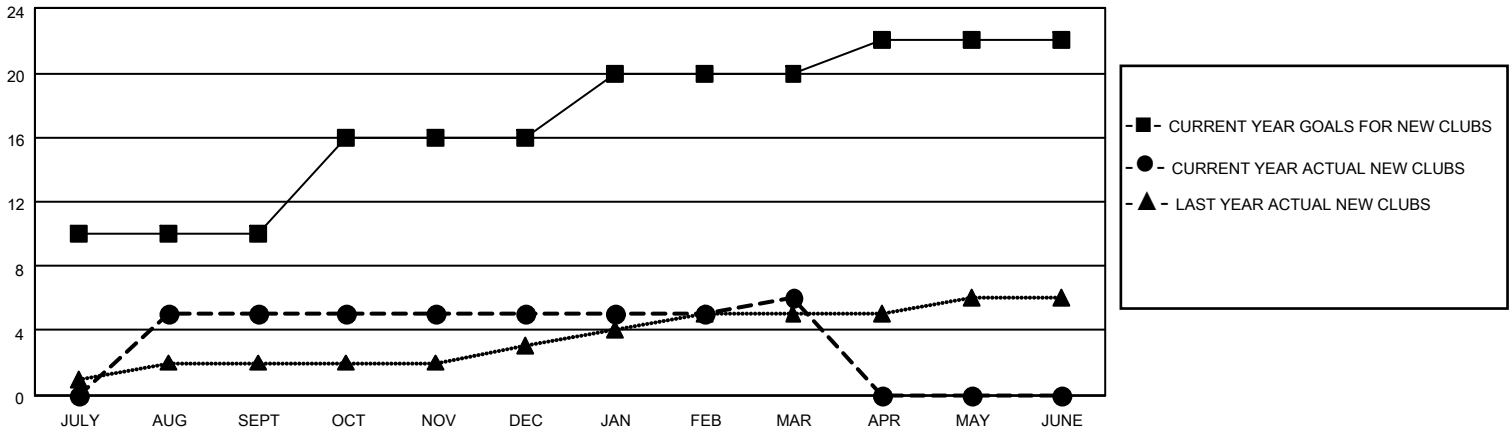
District 318 B

Results as of: 3/31/2023

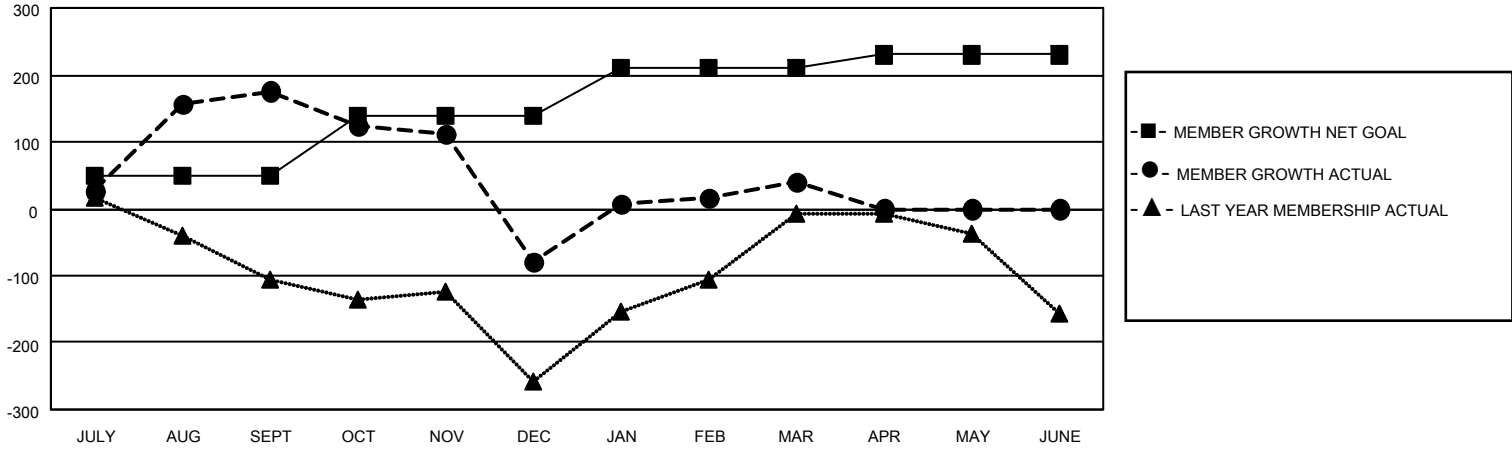
Clubs			
RESULTS FOR 2022-2023			
QUARTER	NEW CLUB GOAL	NEW CLUBS	DROPPED CLUBS
JULY/AUG/SEPT	10	5	0
OCT/NOV/DEC	6	0	6
JAN/FEB/MAR	4	1	0
APR/MAY/JUNE	2	0	0

Members			
RESULTS FOR 2022-2023			
QUARTER	MEMBER GROWTH NET GOAL	MEMBER GROWTH ACTUAL	DROPPED MEMBERS ACTUAL (including transfers)
JULY/AUG/SEPT	50	215	28
OCT/NOV/DEC	90	83	327
JAN/FEB/MAR	70	179	50
APR/MAY/JUNE	20	0	0

GOALS AND ACTUAL NEW CLUBS CUMULATIVE



GOALS AND ACTUAL MEMBERS CUMULATIVE



DROPPED CLUBS: 6

65 CLUBS OF 129 ADDED 1 OR MORE NEW MEMBERS

GENDER DISTRIBUTION

MALE	3,156 (85.44%)
FEMALE	538 (14.56%)
NON BINARY	0 (0.00%)
PREFER NOT TO ANSWER	0 (0.00%)

DROPPED MEMBERS

[CLICK HERE FOR CUMULATIVE MEMBERSHIP DATA](#)

DECEASED	20
CLUB CANCELLED	104
OTHER	281
TOTAL	405

TOTAL FAMILY UNIT MEMBERS	892
FAMILY MEMBERS PAYING HALF DUES	465